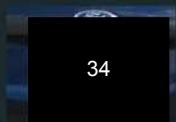
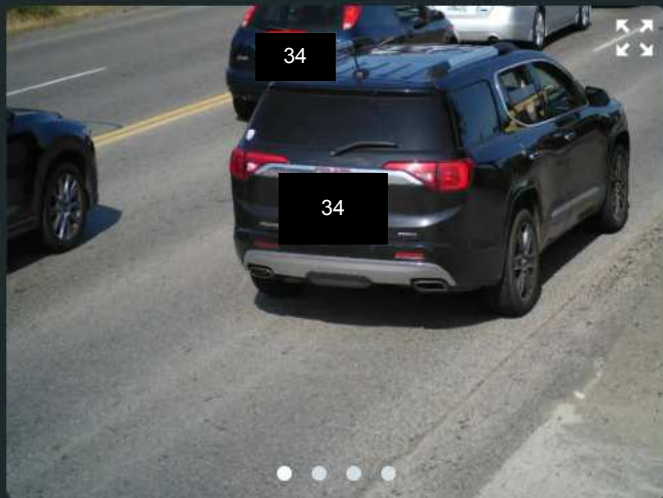




6/2/2025

16:26:18 PDT



WA

34



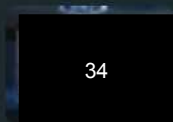
[View More Details](#)

Location [#01 2520 112th St S @ 26th Ave S - EB](#)



6/2/2025

16:25:57 PDT



WA

34



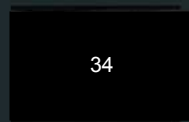
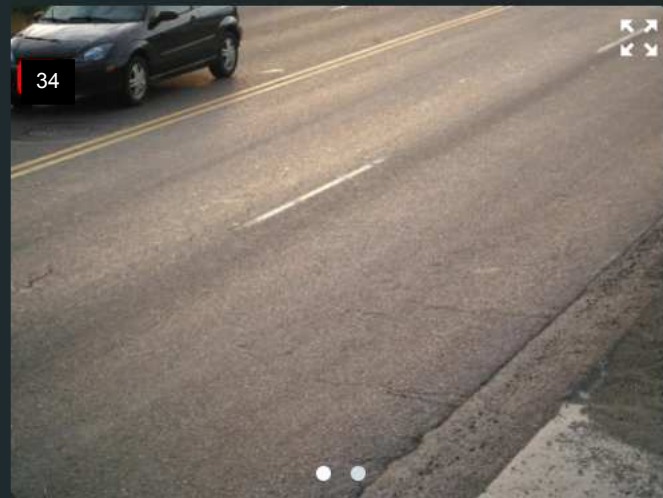
[View More Details](#)

Location [#01 2520 112th St S @ 26th Ave S - EB](#)



6/2/2025

06:28:25 PDT



WA

34



[View More Details](#)

Location [#01 2520 112th St S @ 26th Ave S - EB](#)

# Redaction Log

Reason	Page (# of occurrences)	Description
34	1 (11)	Records "pertaining to a vehicle license plate" that "may reveal the identity of an individual" are exempt from disclosure under the PRA. RCW 42.56.230. RCW 46.22.010 and WAC 308-10-075.